

LASHING RING - "WELD-ON"

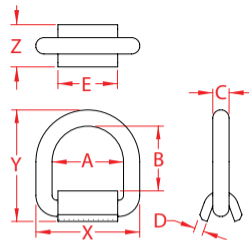
316 STAINLESS STEEL



Import



Drop Forged



| ITEM | A | B | C (size) | D | E | X (height) | Y (length) | Z (width) | WLL (lb) | WT (lb) | PACKAGING TYPE | EACH (qty) | INNER (qty) | CARTON (qty) | UPC |
|------------|-------|-------|----------|-------|-------|------------|------------|-----------|----------|---------|----------------|------------|-------------|--------------|--------------|
| S3722-0013 | 2.35" | 2.05" | 1/2" | 0.30" | 1.96" | 3.43" | 3.65" | 1.38" | *3,000 | 1.00 | POLYBAG | 1 | 1 | 25 | 791506057840 |
| S3722-0016 | 2.94" | 2.55" | 5/8" | 0.38" | 2.56" | 4.30" | 4.48" | 1.75" | *4,500 | 2.18 | POLYBAG | 1 | 1 | 20 | 791506057857 |
| S3722-0020 | 2.98" | 2.58" | 3/4" | 0.38" | 2.56" | 4.47" | 4.63" | 1.89" | *6,500 | 2.53 | POLYBAG | 1 | 1 | 10 | 791506057864 |
| S3722-0025 | 3.00" | 2.52" | 1" | 0.52" | 2.56" | 5.00" | 5.14" | 2.14" | *8,500 | 4.47 | POLYBAG | 1 | 1 | 5 | 791506057871 |

NOTE:

HEAVY DUTY LASHING RING IS DESIGNED FOR DEMANDING TIE-DOWN APPLICATIONS. "D" RING IS FORGED 316 STAINLESS STEEL AND FOLDS FLUSH WHEN NOT IN USE. FEATURES WELD-ON MOUNTING PLATE. IDEAL FOR CARGO APPLICATIONS SUCH AS OVERSEAS CONTAINER SHIPMENTS OR LONG DISTANCE HAULING IN EXPOSED ELEMENTS.

***WORKING LOAD LIMIT DEPENDS ON THE QUALITY OF THE WELD ATTACHING THE BASE.**

ALL DIMENSIONS ARE NOMINAL (+/- 3%) AND ARE SUBJECT TO CHANGE WITHOUT NOTICE.